

SLC EYES ONLY

MINUTES

Minutes of the SLC Committee Meeting - 28th July 2011

Those present:

Wendy Merritt	Ann Courtney	Mary Sabine	Tanya Spencer-Ashby
Tracey de Vere White	Natasha Cole	Guy Clark	Ann-Marie Chessman

Apologies: None

Minutes

The Minutes of the last meeting were read and agreed.

Matters Arising

Uniform:

2 x uniforms have been refunded / returned.

Website: www.stevenageladieschoir.co.uk. - to be updated with minutes, concerts etc. for 2011.

2011 Concerts and Events

9th July - Stevenage Festival - Po(m)p, Circumstance & Nostalgia Concert - SLC and Luton mvc gave a joint concert as part of the fringe events in All Saints Church at the Oval in Stevenage - a very successful concert with a large audience. £400 donated to the church and £400 to Keech Hospice Care + the floor congas were donated towards the Music Therapy Unit at Keech. Unfortunately there was a noisy party next door, but one of the party members gave all his change which added up to over £14, which was very kind of him.

8th October - joint concert with NHAGC (North Herts All Girls Choir) - now confirmed. The United Reformed Church in Cutty's Lane has been booked, with the cost for the hire of the church and annexe requested. The Mayor and her consort are attending and a car parking space will be reserved. The Royal British Legion Stevenage Branch is the chosen charity for this event, to be called the 'Harvest' concert. **Action: WM/TdVW**

6th November - Stevenage half-marathon - all arrangements in hand.

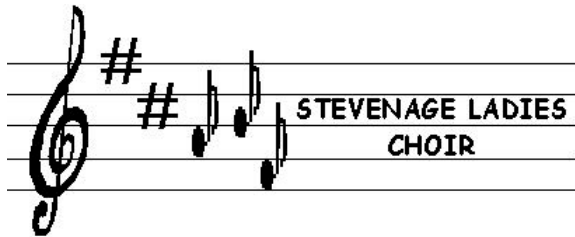
10th December - Christmas concert at St Hugh & St John Church in Chells, Stevenage. Church booking has been made. The Hertfordshire Community Youth Choir and the Hartsfield School Choir have accepted the invitation to sing with the ladies this year.

The ladies will not be required to pay for the new Christmas music, which will remain the property of the choir.

14th December - Christmas party - Cromwell Hotel in Stevenage Old Town has been provisionally booked.

SLC EYES ONLY

Page 1



SLC EYES ONLY

MINUTES

2012 Concerts and Events (tbc)

Saturday 14th April - Concert for The Living Room at St Peters Church, Broadwater Crescent, Stevenage SG2 8AN - Rolls Royce ladies choir have been invited to sing with us (tbc).

19th May - joint concert with Felling mvc in Stevenage - **NOW CONFIRMED**. St. George's church in Cutty's Lane has been provisionally booked with other venues also being taken into consideration as St. George's Church is a very expensive venue. Tracey to enquire if St. Mary's in Hitchin would be available and less expensive. **Action: MS/TdVW**

13th October -concert with 3 Valleys mvc in joint Voices for Hospices concert at All Saints Church in Hertford - proceeds to Isabel Hospice, WGC and Nightingale Hospice, Enfield - **NOW CONFIRMED**.

2013 Concerts and Events (tbc)

20th July - joint concert with Leigh Orpheus mvc in Leigh/Southend - to be confirmed.

Correspondence IN

- Form from Mayor's office for attendance at Christmas concert.
- Emails confirming concert for The Living Room April 2012.

Correspondence OUT

- Completed form to Mayor's office requesting attendance at Christmas concert.

Financial Report

Financial report from 31st August 10 to 21st July 2011 distributed to committee - copy to be put on notice board.

Section Reports

1st Soprano, 2nd Sopranos & Altos

Nothing to report.

AOB

Floor Congas - a pair of floor Congas are stored in Tracey's garage, which are little used. They are to be donated to the Keech Cottage Music Therapy Unit along with the proceeds of the concert in July. **Action: TdVW ongoing**

Cookery Book - to be sent to the printers, ready for sale before Christmas. **Action: TdVW**

Choir Speakers - are very large and awkward to transport - new speakers are needed, with the same range but they can be obtained much smaller these days. A quote to be obtained by Tracey, along with a quote for concert lighting equipment. **Action: TdVW ongoing**

Next Meeting: to be decided by incoming committee after AGM.

Meeting closed at 09.30pm with thanks to Wendy for her hospitality.

SLC EYES ONLY